

Accelerated Reader and myON

28.09.23

Accelerated
Reader





What is Accelerated Reader? (AR)

Accelerated Reader is a computer program that helps teachers manage and monitor children's **independent reading** practice. Your child picks a book at their own level and reads it at their own pace. When finished, your child takes a **short quiz** on the computer. Passing the quiz shows that your child understood what was read.

Accelerated Reader provides feedback based on the quiz results, the teacher can then use the results to help your child **set targets and direct ongoing reading practice**.

Children using Accelerated Reader **choose their own books** to read, rather than having one assigned to them. This makes reading a much more enjoyable experience, as they can choose books that are interesting to them. Teachers can help your child choose books at an appropriate readability level that are challenging without being frustrating, ensuring that your child can pass the quiz and experience success.



How do they choose a book that is 'just right' for them?

All children in Years 2-6 take a **Star Reading Test**.

Some children in Year 1 will take Star Tests, if they have completed the phonics programme and are in a separate reading group.

The Star Reading Test is **34 questions**, that assess the children's comprehension. It begins with practice questions that the children will need to answer correctly to continue to the test. The questions will then change depending on the children's responses.

This test is completed in test conditions in school **only**. This test will happen 3 times a year.

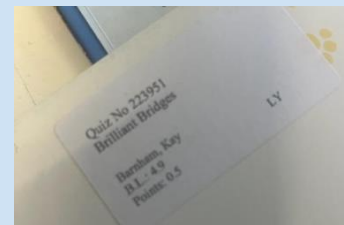
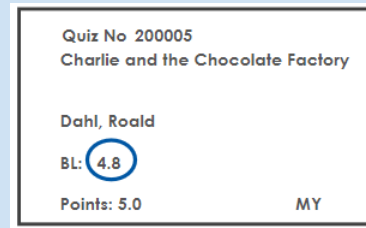
What does the test tell us?

When the test is finished, it gives a **reading range** for each child (**ZPD**) e.g. 3.0-4.5

Some reading ranges span multiple book band colours.

Initially the children will start at the lower end of their reading range and take online comprehension quizzes (at school) to determine how they should move within their reading range. These quizzes should be taken **24-48 hours** after reading the book.

Most books in the school have been relabelled to match the Accelerated Reader scheme. They will have a coloured strip on the spine and a label inside with information about the book level, quiz number and points.



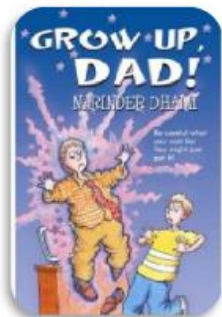
ZPD - Zone of Proximal Development



Zone of Proximal Development

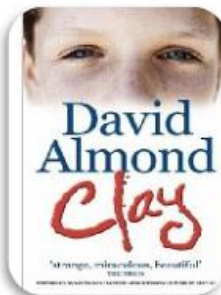
Too Easy

2.8

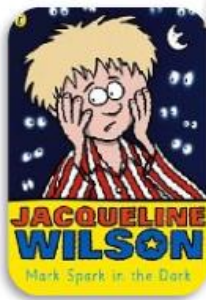


ZPD: Just Right

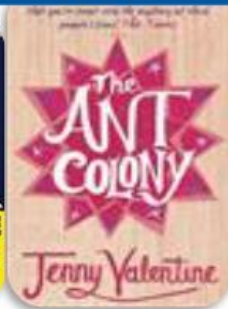
3.2



3.8



4.4

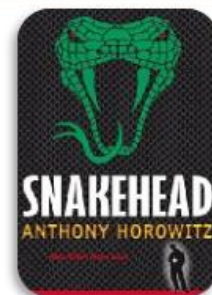


5.0



Too Hard

5.4





Banded colours on spine of books:



(or luminous orange) 0.0 - 0.9

(or lilac) 1.0 - 1.9

(or silver) 2.0 - 2.9

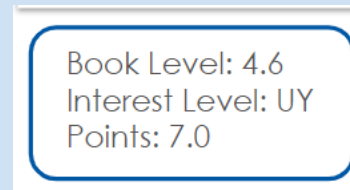
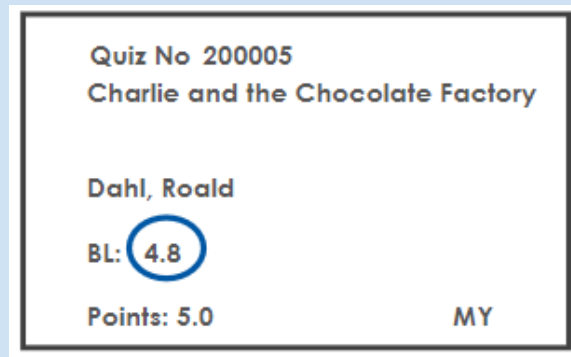
3.0 - 3.9

4.0 - 4.9

5.0 - 5.9

6.0 - 6.9

7+



LY = lower years, approx. age 5-8 (KS1)

MY = middle years, approx. age 9-13 (KS2/3)

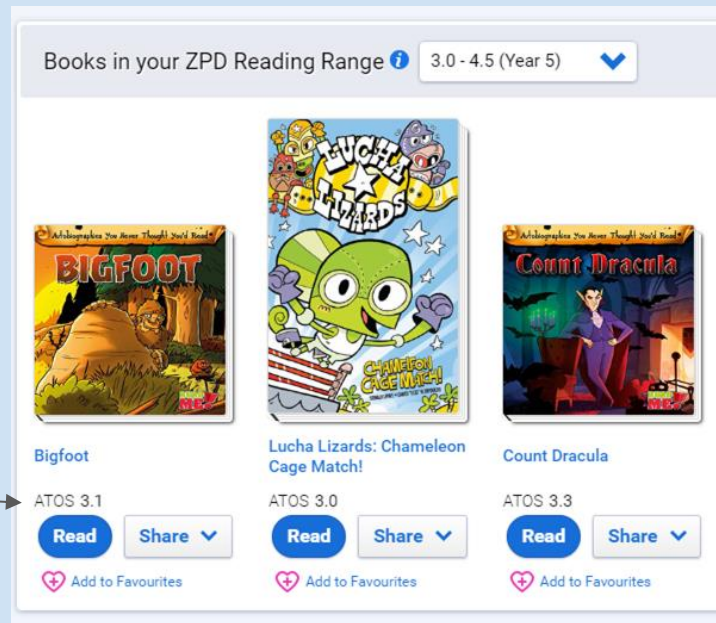
UY = upper years, approx. age 14+ (KS4)



myON - how does this link to AR?

myON is a student-centered, **personalised digital library** that gives students access to more than **7,000** enhanced digital books in the core collection.

Titles are dynamically **matched to each individual student's interests**, grade and reading level (ZPD).



The online resource links to their ZPD from AR.




RENAISSANCE myON Library Projects

Search myON

Star Score 720 ATOS ZPD 4.2 - 6.6 Lexile 985L

See more

Last book opened



Pages read 16
Time spent reading 1 minute

Join Group
Enter access code
Join

Reader meter: Time spent reading


Week Month

0 minutes 5 minutes 10 minutes 15 minutes 20 minutes 25 minutes

Goal

Time spent reading 0 min this week
Books finished 0 this week
Pages read 0 this week

Recommended for you



Princess Candy: The Marshmallow Mermaid, Princess Candy: Sugar Hero, Princess Candy: The Evil Echo, Princess Candy: Green Queen of Mean

How does it work?

HOW IT WORKS

How does myON work?

1

Choose

Students will never run out of great reads with so many exciting titles to choose from! They can pick from personal recommendations, browse by topic or genre, or search by term.



2

Read

As students read on their favorite digital device—online or offline—they can mark-up pages, highlight words, listen to audio versions, and interact with the enhanced digital books.



3

Quiz

At the end of each book, students can take a short quiz to check their comprehension, rate the book, write a review, and then go on to find their next fascinating title to read.

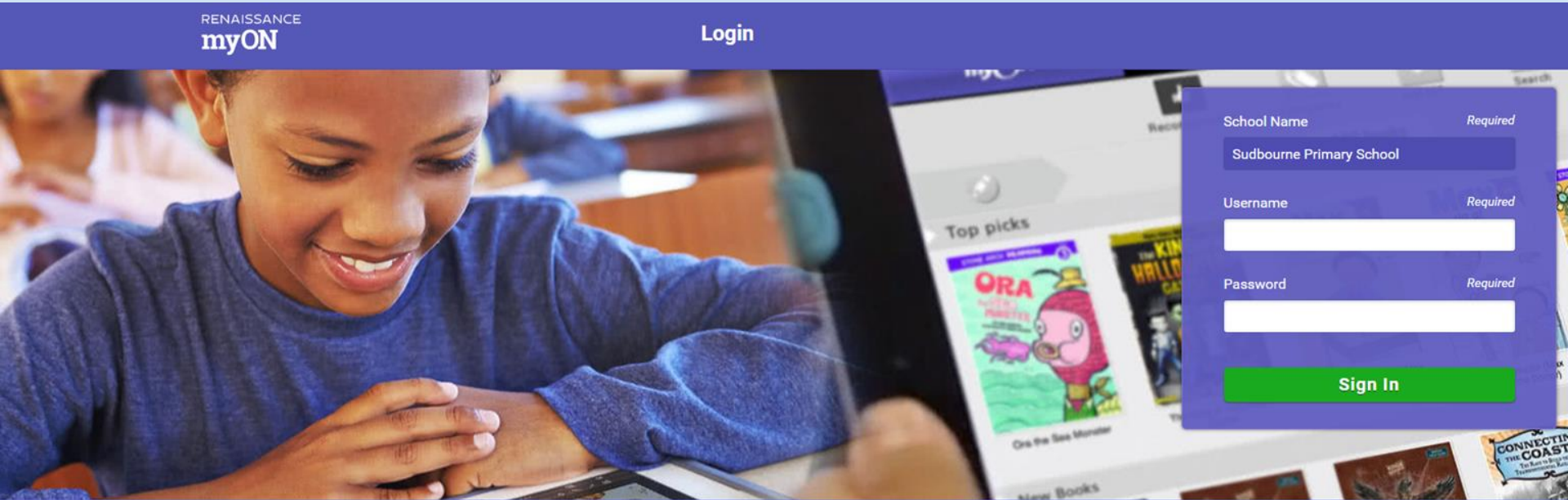


4

Analyze

Twelve real-time reports capture student engagement and growth, providing actionable data that helps you ensure each student has the support they need to succeed.

Login page:

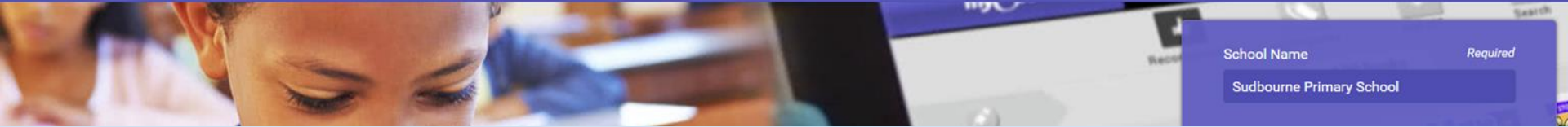


myON is here to help ensure your students can keep reading and learning even if schools close. To support you and your students, please see the learning and implementation resources available on our **Renaissance at Home** hub.

Login page:

RENAISSANCE
myON

Login



Select 'Sudbourne Primary School' from the drop down menu

Username and password:

Username:

first name.last name

E.g.

joe.bloggs

Password: **P**assword789

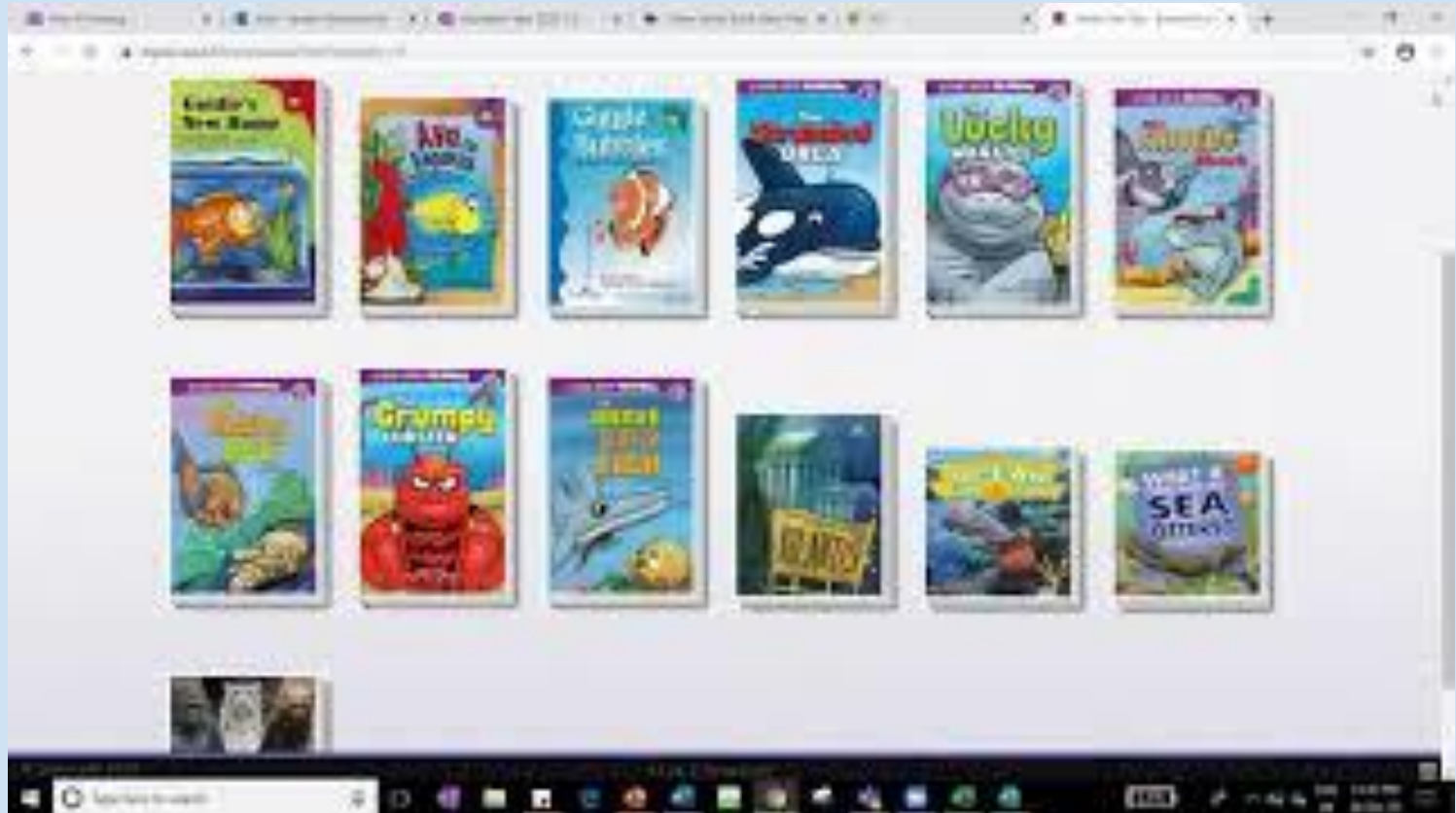
Username and passwords:

What if a pupil has a double barrel name?

You can use a **space** and/or a **dash** depending on how it's saved on the school data system.

Please ask your child's class teacher if you are unsure*

Video link - parents



AR BookFind

ARbookfind.co.uk

AR Bookfind is a catalogue of all the books that have Accelerated Reader quizzes. Anyone can use it to search by title, author, or by using other filters on the Advanced Search option. It's great for pupils to check, if a book they already have at home is on Accelerated Reader! If families have searched AR for a book but it isn't there, they can also suggest quizzes to us: from the Bookfind website, just click 'Suggest Quizzes' from the top menu and add the book's details to the form.



Any Questions

