



+1

0

Multiplication Tables Check

Parent Workshop

Monday 13th January 2025



-3





What is the MTC?

- It is an on-screen check consisting of **25 times table questions**.
- It is statutory for all year 4 pupils.
- Your child will be able to answer 3 practice questions before taking the actual check.
- They will then have **6 seconds** to answer each question.
- On average, the check should take no longer than 5 minutes to complete.
- There is no pass mark.





What is the purpose of the MTC?

- The purpose of the check is to determine whether your child can fluently recall their times tables up to 12, which is **essential for future success in mathematics**.
- It will also help us to identify if your child may need additional support.

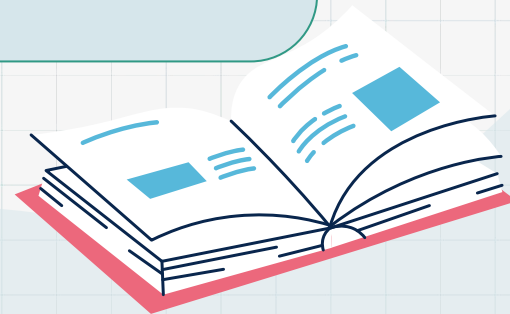




When is the MTC?

Between Monday 2nd June and Friday 13th June

- Two-week window to administer the test
- Completed at school
- In school, pupils can sign in to the “try it out” check from mid-April



What if my child cannot access the check?

The check was designed to be inclusive and accessible to as many children as possible, including those with special educational needs or disability (SEND) or English as an additional language (EAL).

Access arrangements are possible.

- Colour overlays
- Font size
- Pause between questions (to a maximum limit of 30 minutes to complete the test) with a 'next' button
- Remove the on-screen number pad.
- Input assistance
- Audio version
- Pupils can not have additional time





Why are multiplication tables essential?

- Automatic recall of $6 \times 7 = 42$, allows children to access these questions efficiently
- They do not need to rely on counting procedures
- This reduces the cognitive load

$$326 \times 27 =$$

Convert into a mixed number

$$\frac{47}{7}$$

$$\frac{3}{7} + \frac{5}{6}$$

Find

$$\frac{2}{7} \text{ of } 42$$



What does Sudbourne do to prepare?

- Daily multiplication practise
- Conceptual teaching of multiplication and the relationships between the tables
- Provide children with a times table rock stars account



What does Sudbourne do to prepare?

- Daily fluency sessions

1) Filling in the booklets
2 minutes

Repeated retrieval of already-known facts

2) Chanting and marking
3 minutes

Repeated oral rehearsal of both already-known and not-yet-known facts

1) Recording scores
2 minutes

Identifying where you need to intervene with targeted support

4) Celebrating and identifying facts to learn
3 minutes

Developing motivation
Targeted support

My 2 Times Table
Practice Booklet

Name: _____

Class: _____

New facts in this booklet:

$$2 \times 2 = 4$$

$$3 \times 2 = 6$$

$$4 \times 2 = 8$$

$$5 \times 2 = 10$$

$$6 \times 2 = 12$$

$$7 \times 2 = 14$$

$$8 \times 2 = 16$$

$$9 \times 2 = 18$$

What does Sudbourne do to prepare?

Five threes
are fifteen

- Multiplication facts are stored in the verbal memory.
- We chant multiplication facts in the same way, always starting with the largest number
- We avoid adding extra words to create a strong verbal link between numbers

$2 \times 3 = \underline{\quad}$

$6 \times 3 = \underline{\quad}$

$9 \div 3 = \underline{\quad}$

$3 \times 4 = \underline{\quad}$

$5 \times 3 = \underline{\quad}$

$3 \times 5 = \underline{\quad}$

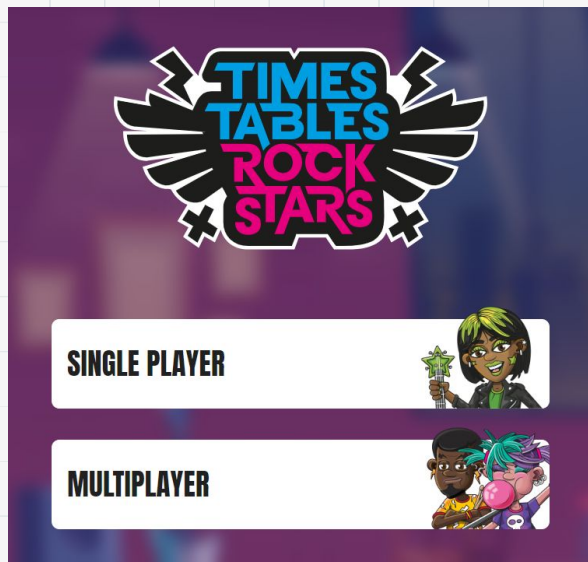
$3 \times 5 = \underline{\quad}$

$12 \div 3 = \underline{\quad}$

$2 \times 3 = \underline{\quad}$

What can I do to prepare for the MTC?

Daily practise



- All children have TTRS logins.
- These are stuck into their reading journals.
- Phase 2 & 3 homework is to practise their times tables every day for at least 10 minutes.

+1





What can I do to prepare for the MTC?

To see what times tables your child needs to work on, go to TTRS, click their character and click my stats. Their class teacher has also sent this home.

AISHA MARTINEZ
NEW ARTIST

Profile **Stats** Charts Settings Downloads

Last Played 29th January 23, 12:19

Fluency

Heatmap
How quickly Sienna-Rae correctly answers each individual question. The greener the faster.

2-12x 2-20x Sienna-Rae heatmap as of 29 Jan 2023

	4	8	6	7	9	11	12				
10	10 × 10	10 × 2	10 × 5	10 × 3	10 × 4	10 × 8	10 × 6	10 × 7	10 × 9	10 × 11	10 × 12
2	2 × 10	2 × 2	2 × 5	2 × 3	2 × 4	2 × 8	2 × 6	2 × 7	2 × 9	2 × 11	2 × 12
5	5 × 10	5 × 2	5 × 5	5 × 3	5 × 4	5 × 8	5 × 6	5 × 7	5 × 9	5 × 11	5 × 12
3	3 × 10	3 × 2	3 × 5	3 × 3	3 × 4	3 × 8	3 × 6	3 × 7	3 × 9	3 × 11	3 × 12





What can I do to prepare for the MTC?

You will be able to see how quickly they can answer each question.

	10	2	5	3	4	8	6	7	9	11	12
10	10 × 10	10 × 2	10 × 5	10 × 3	10 × 4	10 × 8	10 × 6	10 × 7	10 × 9	10 × 11	10 × 12
2	2 × 10	2 × 2	2 × 5	2 × 3	2 × 4	2 × 8	2 × 6	2 × 7	2 × 9	2 × 11	2 × 12
5	5 × 10	5 × 2	5 × 5	5 × 3	5 × 4	5 × 8	5 × 6	5 × 7	5 × 9	5 × 11	5 × 12
3	3 × 10	3 × 2	3 × 5	3 × 3	3 × 4	3 × 8	3 × 6	3 × 7	3 × 9	3 × 11	3 × 12
4	4 × 10	4 × 2	4 × 5	4 × 3	4 × 4	4 × 8	4 × 6	4 × 7	4 × 9	4 × 11	4 × 12
8	8 × 10	8 × 2	8 × 5	8 × 3	8 × 4	8 × 8	8 × 6	8 × 7	8 × 9	8 × 11	8 × 12
6	6 × 10	6 × 2	6 × 5	6 × 3	6 × 4	6 × 8	6 × 6	6 × 7	6 × 9	6 × 11	6 × 12
7	7 × 10	7 × 2	7 × 5	7 × 3	7 × 4	7 × 8	7 × 6	7 × 7	7 × 9	7 × 11	7 × 12
9	9 × 10	9 × 2	9 × 5	9 × 3	9 × 4	9 × 8	9 × 6	9 × 7	9 × 9	9 × 11	9 × 12
11	11 × 10	11 × 2	11 × 5	11 × 3	11 × 4	11 × 8	11 × 6	11 × 7	11 × 9	11 × 11	11 × 12
12	12 × 10	12 × 2	12 × 5	12 × 3	12 × 4	12 × 8	12 × 6	12 × 7	12 × 9	12 × 11	12 × 12

The colors on this page relate to the speed shown in this table:

0 - 1s	1 - 2s	2 - 3s	3 - 4s	4 - 5s	5 - 6s	6 - 7s	7 - 8s	8 - 9s	9 - 10s	> 10s
--------	--------	--------	--------	--------	--------	--------	--------	--------	---------	-------

-2





What can I do to prepare for the MTC?

- 6, 7, 8, 9 and 12 times tables are the most likely to come up
- There is an emphasis on the 6, 7, 8, 9 and 12 multiplication tables because these have been determined to be the most difficult multiplication tables.

	10	2	5	3	4	8	6	7	9	11	12
10	10 × 10	10 × 2	10 × 5	10 × 3	10 × 4	10 × 8	10 × 6	10 × 7	10 × 9	10 × 11	10 × 12
2	2 × 10	2 × 2	2 × 5	2 × 3	2 × 4	2 × 8	2 × 6	2 × 7	2 × 9	2 × 11	2 × 12
5	5 × 10	5 × 2	5 × 5	5 × 3	5 × 4	5 × 8	5 × 6	5 × 7	5 × 9	5 × 11	5 × 12
3	3 × 10	3 × 2	3 × 5	3 × 3	3 × 4	3 × 8	3 × 6	3 × 7	3 × 9	3 × 11	3 × 12
4	4 × 10	4 × 2	4 × 5	4 × 3	4 × 4	4 × 8	4 × 6	4 × 7	4 × 9	4 × 11	4 × 12
8	8 × 10	8 × 2	8 × 5	8 × 3	8 × 4	8 × 8	8 × 6	8 × 7	8 × 9	8 × 11	8 × 12
6	6 × 10	6 × 2	6 × 5	6 × 3	6 × 4	6 × 8	6 × 6	6 × 7	6 × 9	6 × 11	6 × 12
7	7 × 10	7 × 2	7 × 5	7 × 3	7 × 4	7 × 8	7 × 6	7 × 7	7 × 9	7 × 11	7 × 12
9	9 × 10	9 × 2	9 × 5	9 × 3	9 × 4	9 × 8	9 × 6	9 × 7	9 × 9	9 × 11	9 × 12
11	11 × 10	11 × 2	11 × 5	11 × 3	11 × 4	11 × 8	11 × 6	11 × 7	11 × 9	11 × 11	11 × 12
12	12 × 10	12 × 2	12 × 5	12 × 3	12 × 4	12 × 8	12 × 6	12 × 7	12 × 9	12 × 11	12 × 12

The colors on this page relate to the speed shown in this table:

0 - 1s	1 - 2s	2 - 3s	3 - 4s	4 - 5s	5 - 6s	6 - 7s	7 - 8s	8 - 9s	9 - 10s	> 10s
--------	--------	--------	--------	--------	--------	--------	--------	--------	---------	-------



How will the results be used?

- Children will not see their score at the end of the check.
- We will have access to pupil results at the end of June.
- This will allow us to identify pupils who need additional support.
- Class teachers will share the results with you in their summer school report.



-2

+1



What is the MTC?



- MathsFrame have mirrored the MTC so children can practise online.
- <https://mathsframe.co.uk/en/resources/resource/477/Multiplication-Tables-Check>
- Have a go now to see what it's like!



Information for parents: multiplication tables check



Standards
& Testing
Agency

Multiplication tables check

Do you have a child in year 4 at primary school?

If so, your child will be participating in the multiplication tables check (MTC) in June.

The purpose of the check is to determine whether your child can fluently recall their times tables up to 12, which is essential for future success in mathematics. It will also help your child's school to identify if your child may need additional support.

What is the multiplication tables check?

It is an on-screen check consisting of 25 times table questions. Your child will be able to answer 3 practice questions before taking the actual check. They will then have 6 seconds to answer each question. On average, the check should take no longer than 5 minutes to complete.

What if my child cannot access the check?

There are several access arrangements available for the check, which can be used to support pupils with specific needs. Your child's teacher will ensure that the access arrangements are appropriate for your child before they take the check in June.

The check has been designed to be inclusive and accessible to as many children as possible, including those with special educational needs or disability (SEND) or English as an additional language (EAL). However, there may be some circumstances in which it will not be appropriate for a pupil to take the check, even when using suitable access arrangements.

If you have any concerns about your child accessing the check, you should discuss this with your child's school.



Information for parents: multiplication tables check



Standards
& Testing
Agency

Do I need to do anything to prepare my child for the check?

No, you do not need to do anything additional to prepare your child for the check. As part of usual practice, teachers may ask you to practise times tables with your child.

Schools will have unlimited access to a 'try it out' area from April. They can use this to make sure pupils have the necessary support to access the check. This includes opportunities for pupils to familiarise themselves with the check application and try out any access arrangements that may be required.

How will the results be used?

Schools will have access to all their pupils' results, to allow them to identify pupils who need additional support.

Will I receive feedback on my child's check?

Yes. Your child's teacher will share your child's score with you. There is no pass mark for the check.

Further information

Your child's teacher will be able to answer any questions about the MTC.

For further details you can also visit www.gov.uk/STA.

Further information about the personal data we collect, process and store for the MTC is available in the department's [personal information charter](#)¹.

